



# for Mining

Are you looking for coatings strong enough to withstand the heaviest vehicle traffic?

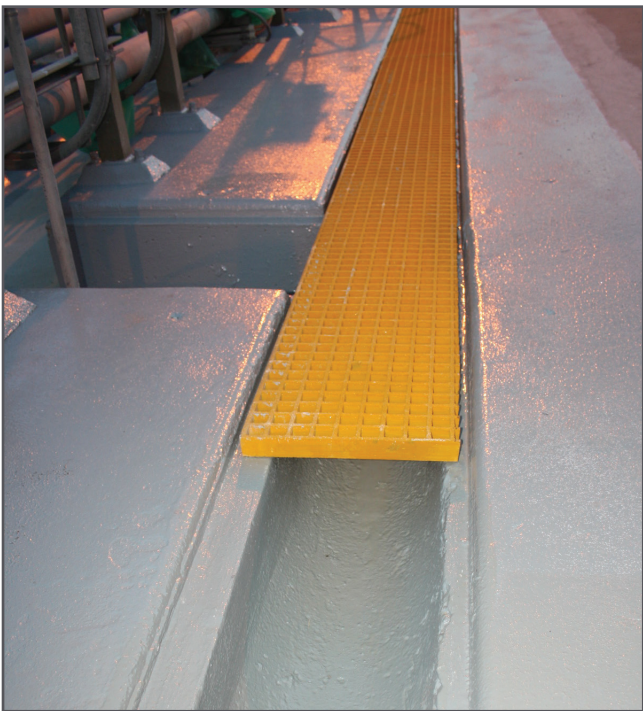
What about highly acidic environments in equipment and drains?

Are other coatings quickly worn away in mineral processing areas?



## WHY JAXXON?

- ✔ Solventless, odourless products free from the hazards typically used in heavy-duty products.
- ✔ Products formulated for wear resistance and film strength. Kevlar® reinforced options available for extra impact resistance and durability.
- ✔ Excellent all-round resistance to most industrial chemicals, including up to 98% sulphuric acid.
- ✔ Coatings can be applied in wet or dry, cold or hot conditions, meaning shut downs are predictable with no costly delays. Get it right the first time!
- ✔ Proven track record of performance in mining for over 10 years, including many successful trials. Don't fall for the cheaper options that fail within 6 months!



### Past Clients

*BHP/Bluescope Steel*

*Rio Tinto*

*MIM Holdings*

*Xstrata Zinc*

*Energy Resources Aust.*

*Grundfos A/C (Denmark)*



Ph: 1300 EPOXIES [www.RealWorldEpoxies.com](http://www.RealWorldEpoxies.com)

A nickel mine in Noumea urgently required a better surfacing solution to their ore loading area. A heavy-duty mortar system was quickly formulated using 1335 and a specialty aggregate blend that offered the extreme wear resistance and compressive strength they were looking for.